



Anti-FBXO7 Antibody

Alternative Names: FBX, FBXO7, FBX7, PARK15, PKPS, F-Box Protein 7, F-box only protein 7

Catalogue Number: AB19-10119-50ug

Size: 50 µg

Background Information

The F-box protein family are the substrate-recognition components of the Skp1-Cullin-F-box protein E3 ubiquitin ligase complex (SCF) which catalyses the phosphorylation-dependent ubiquitination of proteins destined for proteasomal degradation.

F-box proteins make up one of the four subunits of the SCF complex, contributing to its specificity by aggregating to target proteins independently of the complex and then binding to the Skp1 component, thereby allowing the target protein to be brought into proximity with the E2 ubiquitin-conjugating enzyme recruited by the E3ubiquitin ligase.

The F-box only protein 7 (Fbxo7) is one of the many FBPs identified in humans and mutations in Fbxo7 have been associated with early-onset parkinsons and cancer.

Product Information

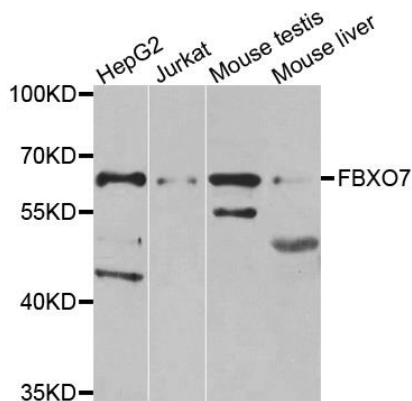
Antibody Type:	Polyclonal	Host:	Rabbit
Isotype:	IgG	Species Reactivity:	Human, Mouse, Rat
Immunogen:	Partial length recombinant human FBXO7 from the C-terminal region		
Format:	50 µg in 50 µl PBS with 0.02% sodium azide, 50% glycerol, pH7.3.		
Storage Conditions:	Store at -20°C. Avoid freeze / thaw cycles.		
Applications:	WB IHC IF WB 1:500-2000. IHC 1:50-200. IF 1:50-200.		

Additional Information

Subcellular location:	Cytoplasm, Mitochondrion, Nucleus, Cytosol	MW:	59kDa (Intended as a general guide and does not allow for all isoforms and species variations)
Gene ID	25793	Uniprot ID:	Q9Y3I1

Antibody Validation:

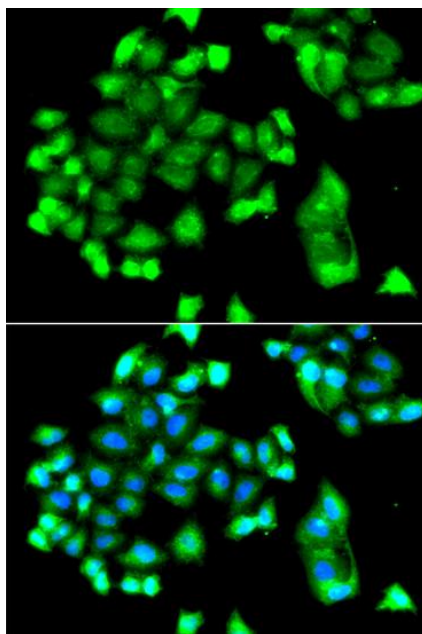
Use in Western Blot (WB)



Western blot analysis with anti-FBXO7 Rabbit Polyclonal Antibody (AB19-10119) diluted at 1:1,000

Band detected for GPRC6A at approximately 140 kDa under reducing conditions.

Use in Immunofluorescence (IF)



Immunofluorescence analysis of A549 cells using FBXO7 Rabbit Polyclonal Antibody (AB19-10119) diluted at 1:100.

Blue: DAPI for nuclear staining.