



Anti-GPRC6A Antibody

Alternative Names: G-protein coupled receptor family C group 6 member A, hGPRC6A, GPRC6A, GPCR, bA86F4.3, GPCR33, hGPCR33

Catalogue Number: AB18-10065

Size: 100ug

Background Information

G protein-coupled receptor class C group 6 member A (GPRC6A) is a widely expressed G-protein coupled receptor, believed to be a master regulator of complex endocrine networks and metabolic processes. GPRC6A is activated by multiple ligands, including osteocalcin (Ocn), testosterone (T), basic amino acids, and various cations. [1]

Members of family C of the G protein-coupled receptor (GPCR) superfamily, such as GPRC6A, are characterised by an evolutionarily conserved amino acid-sensing motif linked to an intramembranous 7-transmembrane loop region. Several members of GPCR family C, including GPRC6A, also have a long N-terminal domain.

Product Information

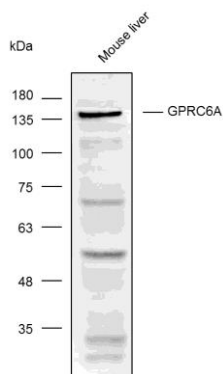
Antibody Type:	Polyclonal	Host:	Rabbit
Isotype:	IgG	Species Reactivity:	Human Mouse
Immunogen:	Recombinant protein of human GPRC6A		
Format:	100 µg in 100 µl PBS containing 0.02% sodium azide.		
Storage Conditions:	6 months: 4°C. Long-term storage: -20°C. Avoid multiple freeze and thaw cycles.		
Applications:	WB 1:500-2000 IHC 1:50-200		

Additional Information

Subcellular location:	Cell membrane, Multi-pass membrane protein	MW:	105kDa
Gene ID	222545	Uniprot ID:	Q5T6X5

Antibody Validation:

Use in Western Blot (WB)



Western blot analysis with anti-GPRC6A Rabbit Polyclonal Antibody (AB18-10065) diluted at 1:1,000

Band detected for GPRC6A at approximately 140 kDa under reducing conditions.

References

1. Min Pi, Satoru Kenneth Nishimoto, L. Darryl Quarles. Mol Metab. 2017 Feb; 6(2): 185–193.